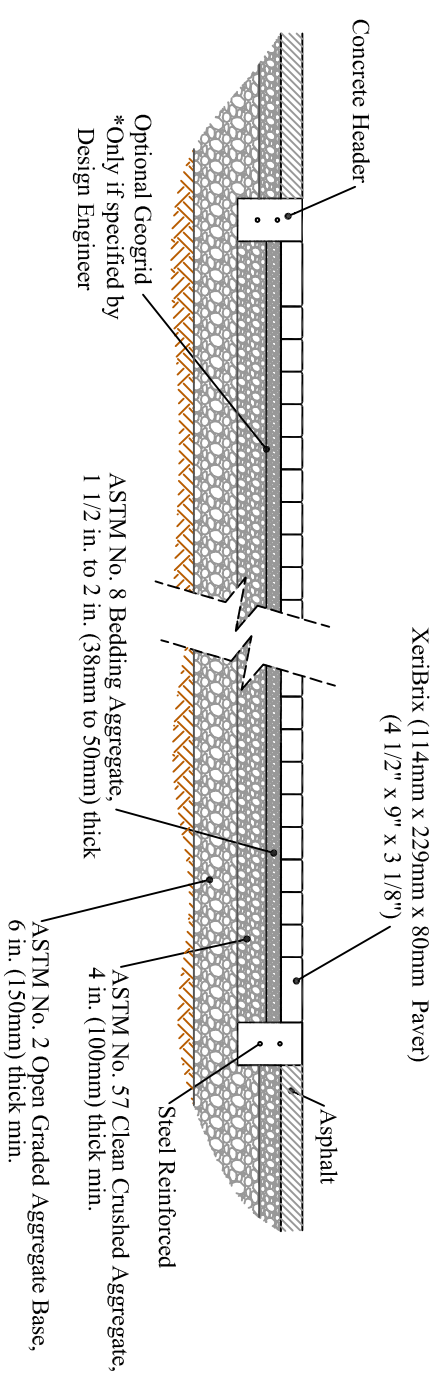
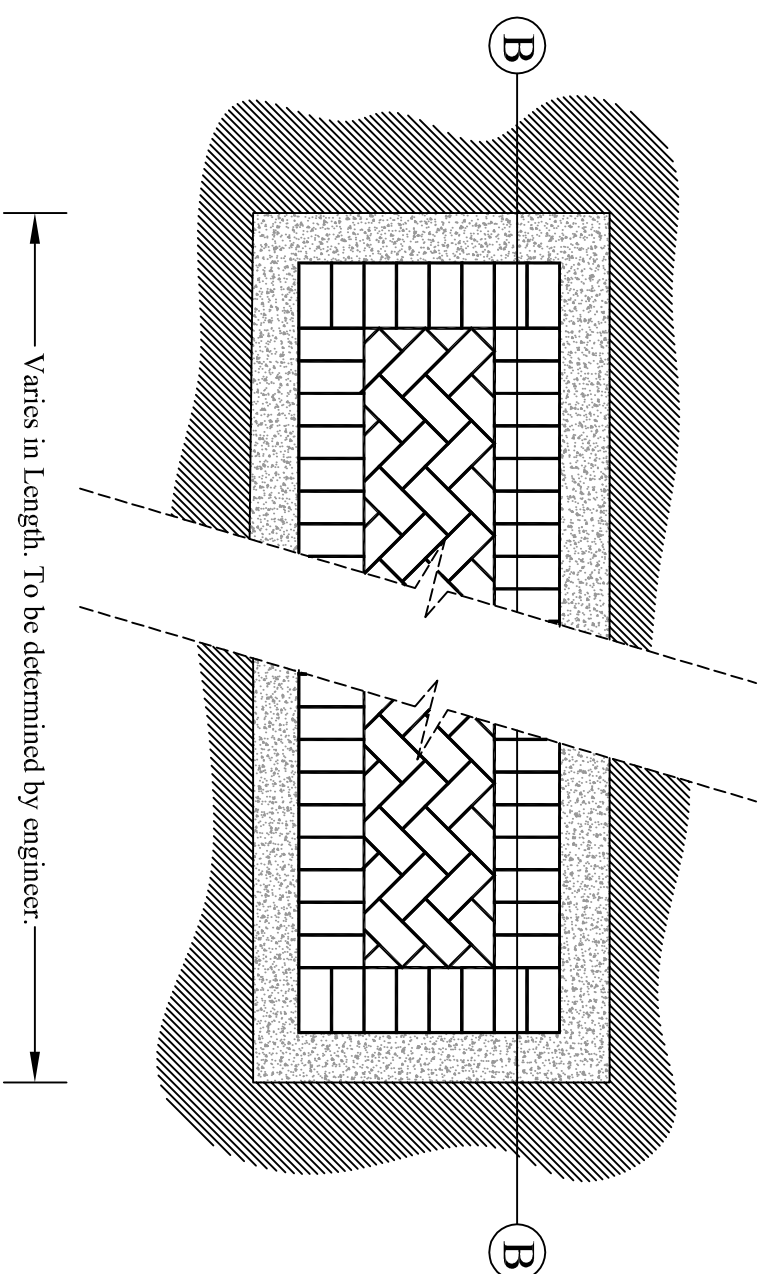


### A-A XERIPAVE TRENCH APPLICATION



### B-B XERIBRIX TRENCH APPLICATION



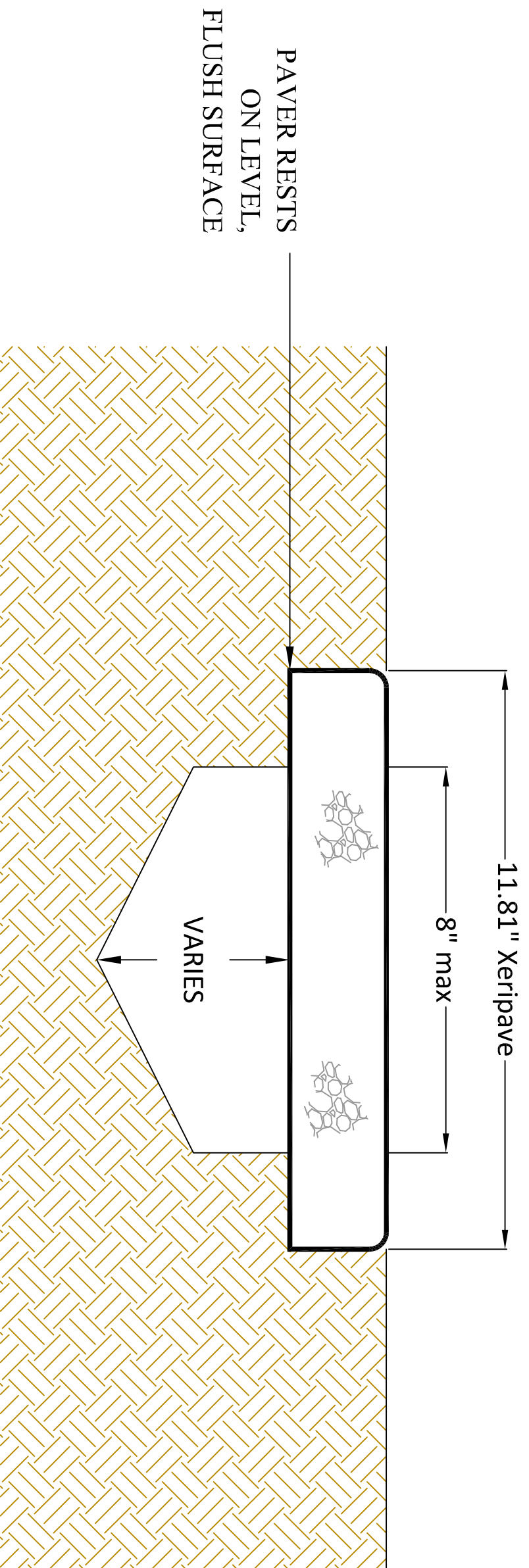
815 N.E. 172nd Ave.  
VANCOUVER, WA 98684  
800-377-3877 PH  
360-694-0281 FAX

Title: XP Trench Detail

DRAWN BY: MLN

DATE: 11/21/14  
SCALE: NTS

SHEET #: XP-01



XERIPAVE PERVIOUS PAVER  
 ATOP TRENCH DRAIN

**NOTE:**

IF INSTALLED IN A VEHICULAR APPLICATION,  
 A 300x300x90mm (11.81"x11.81"x3.54") XERIPAVE IS REQUIRED



815 N.E. 172nd Ave.  
 VANCOUVER, WA 98684  
 800-377-3877 PH  
 360-694-0281 FAX

Title: XP Atop Trench Drain

DRAWN BY: MLN

DATE: 11/12/14  
 SCALE: NTS

SHEET #: XP-01