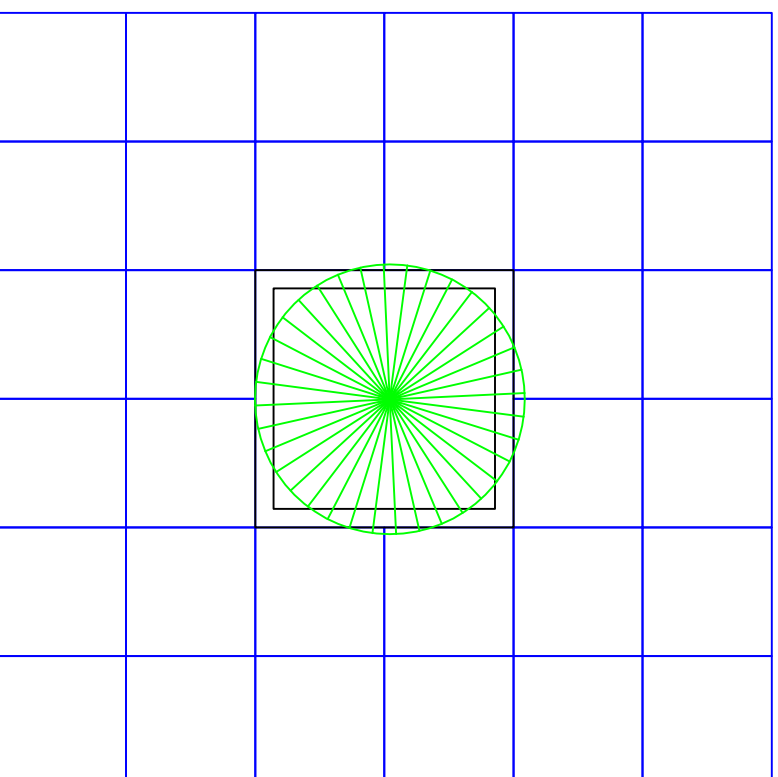
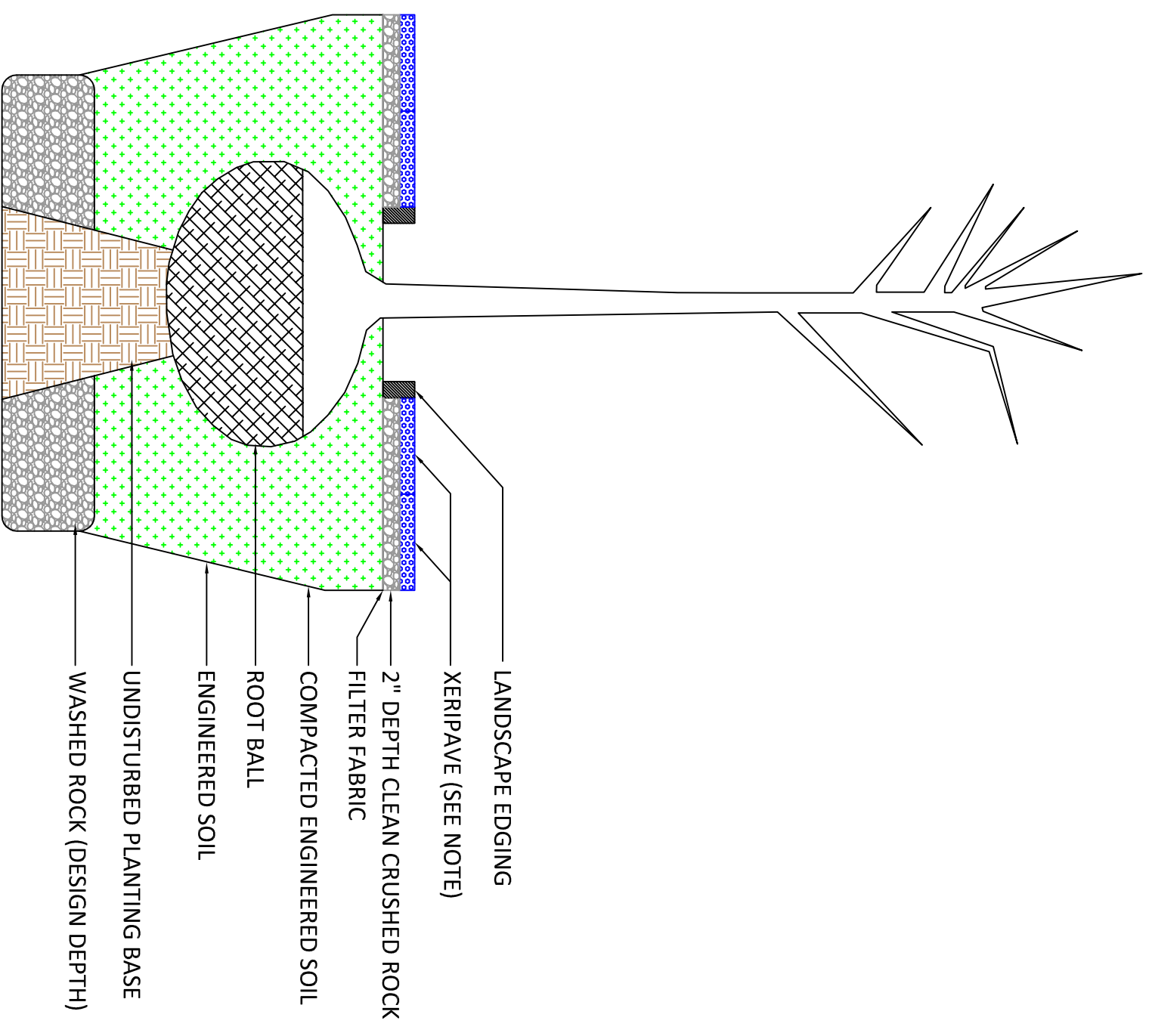


# XERIPAVE TREE SURROUND



PLAN VIEW

NOTE:  
 AS TREE GROWS, (2 ea) 12" PAVERS  
 CAN BE REPLACED WITH (1 ea) 16" PAVER  
 ALLOWING TREE MORE ROOM



LANDSCAPE EDGING

XERIPAVE (SEE NOTE)

2" DEPTH CLEAN CRUSHED ROCK

FILTER FABRIC

COMPACTED ENGINEERED SOIL

ROOT BALL

ENGINEERED SOIL

UNDISTURBED PLANTING BASE

WASHED ROCK (DESIGN DEPTH)



815 N.E. 172nd Ave.  
 VANCOUVER, WA 98684  
 800-377-3877 PH  
 360-694-0281 FAX

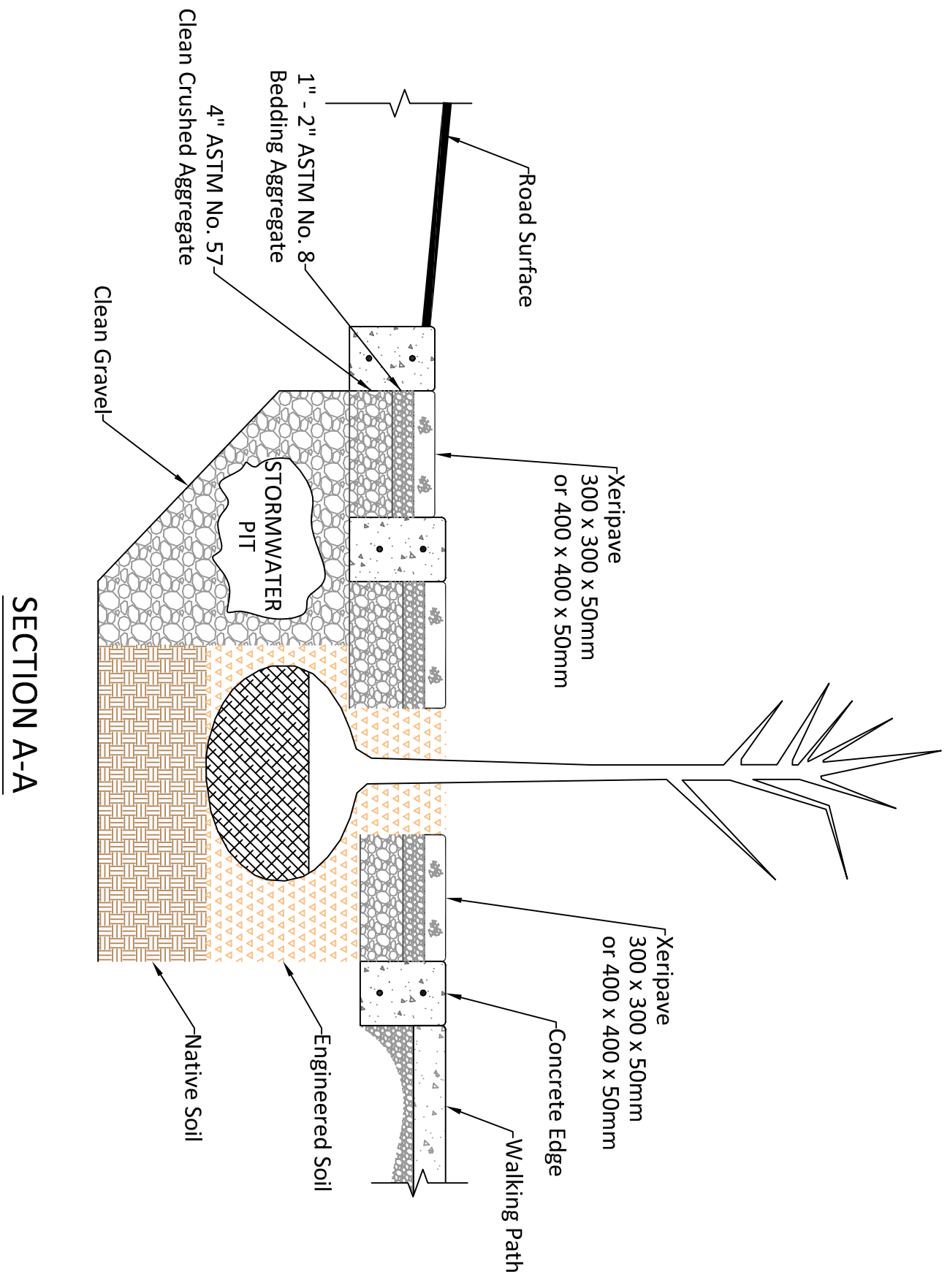
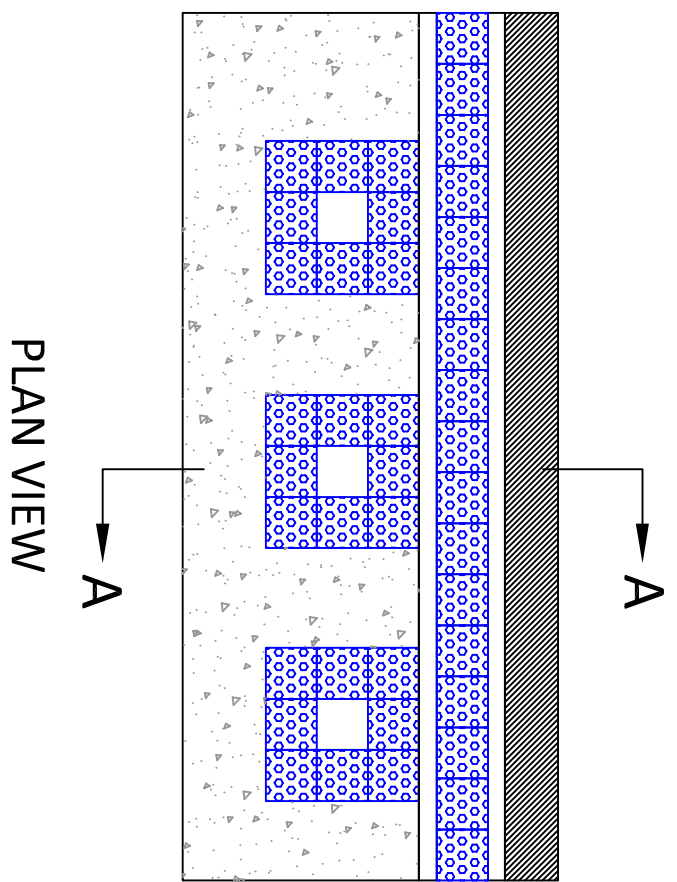
Title: XP Tree Planting Cross Section

DRAWN BY: MLN

DATE: 02/14/14  
 SCALE: NTS

SHEET #: XP-01

# LID - INNER CITY



815 N.E. 172nd Ave.  
 VANCOUVER, WA 98684  
 800-377-3877 PH  
 360-694-0281 FAX

Title: LID - Inner City

DRAWN BY: MLN

DATE: 11/12/14  
 SCALE: NTS

SHEET #: XP-01