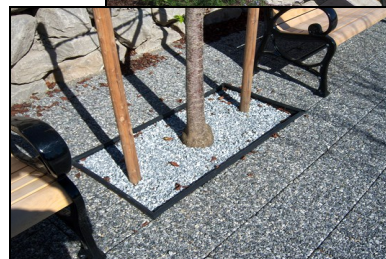


# Xeripave® Super Pervious (SP) Pavers

## Case Studies: Oregon City Amtrak Station

The Oregon City Amtrak Station was not known for its amenities. The station consisted of a platform with no sheltered waiting area for city Tri-Met rail users. So in 2010 when the city approved a site improvement project, it was an exciting opportunity. The project would include the relocation of a historic Sothern Pacific Building, built in the 1920's, to the Oregon City Station.

The initial phase of the project included the construction of the rail platform, entrance to the site and the incorporation of a "green" stormwater infrastructure with limited parking. The second phase of the project consisted of relocating the historic depot onto a raised platform above the flood plain and the completion of a 50-space parking lot.



The city wanted the construction to follow its comprehensive stormwater management plan by limiting the amount of stormwater runoff in this newly renovated area. John Burrell, Project Manager / Erosion Control Officer for the city, addressed the issue by electing to utilize Xeripave® SP Pavers. Xeripave® assisted in the prevention of stormwater runoff by supplying an infiltration rate of more than one gallon



per second per square. The SP Pavers were installed and utilized in tree surround applications to promote deep root watering and aeration. The pavers provided the city with a much needed, multi-functional solution, extending the tree surrounds into a bench seating and pedestrian area, while offering an ADA slip and skid resistant surface.

Due to the pavers' porous attributes, normally only 12 to 18 percent of surface coverage is required for optimum stormwater drainage. To maintain a cost effective solution, the city elected to have the pavers used in conjunction with standard concrete. The pavers provided a natural look that complemented the surrounding landscape.

Additionally, John noted that the city has been receiving positive feedback in regards to the pavers, and they are looking to incorporate them into future projects.

**Client:** Oregon City Public Works

**Installation Date:** July 2010

**Contractor:** F&F Structures

**Product:** Grey 300x300x50 mm Pervious Pavers

**Xeripave® Surface Area:** 450 sq. ft.

