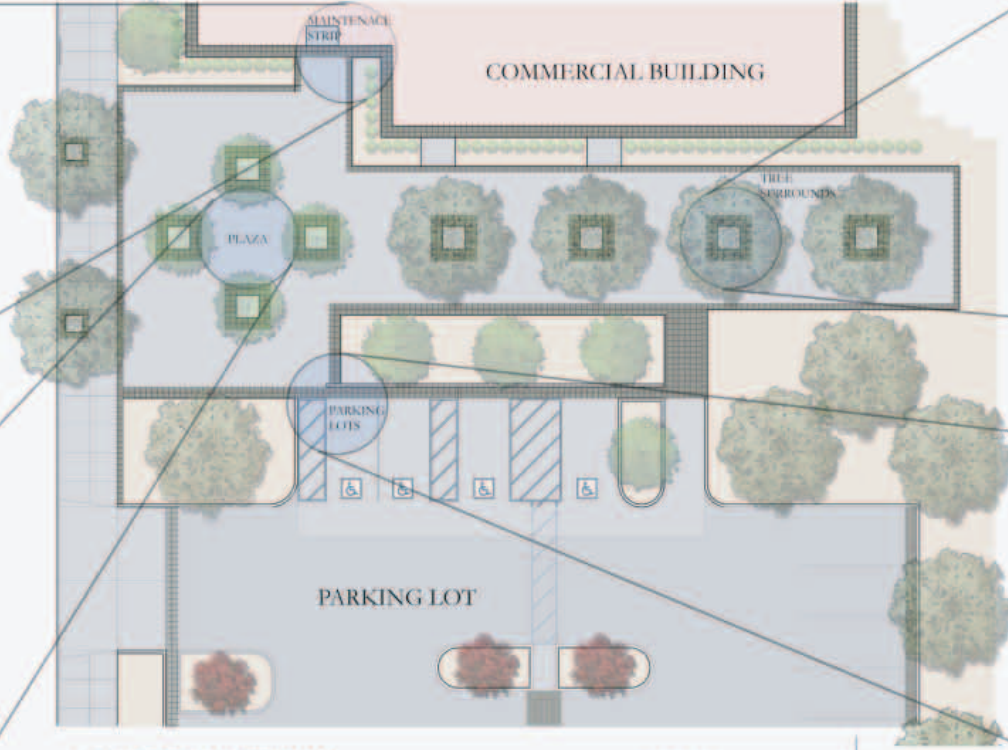




MAINTENANCE STRIP
 At the building edge zones of Xeripave Super Permeable Pavers create a clean, permeable border at the foundation, underneath which different methods of containment or restriction of water are employed. This hard surface allows for easy maintenance access to the building.



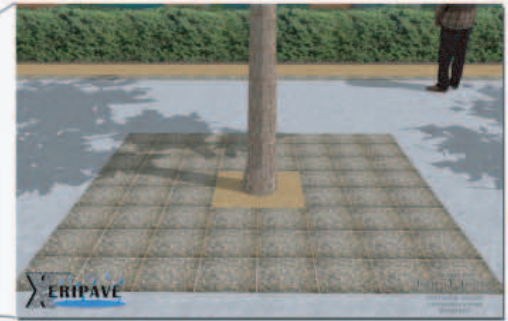
PLAZAS
 Using areas of Xeripave Super Permeable Pavers in the hardscape results in a smaller footprint of impervious surfaces. Additionally, the pavers become a design tool when used to introduce borders, stripes and other patterns in the hardscape.



CONCEPTUAL SITE PLAN

SCALE: 1" = 10'-0"

GRAPHIC SCALE



TREE SURROUNDS
 Tree surrounds are a well suited application for the Xeripave Super Permeable Pavers, replacing traditional metal grates commonly used in tree wells. An area of these pavers allows the surround to be part of the sidewalk. It offers a large water capture zone for tree roots to access water, air and nutrients without giving up sidewalk space. Other problems often associated with the metal grates are eliminated such as trapped debris, theft of grates, slotted grates that are tripping hazards and grates that strangle trees as the trunks grow.



PARKING LOT
 There are many uses for Xeripave Super Permeable Pavers in parking areas - such as borders and edging. As only 15 to 18% surface coverage is required, costs are greatly reduced when prepping the sub base. The balance of the surface can be any hardscape material desired.



COMMERCIAL APPLICATIONS

THE OFFICE OF
 JEFFREY F. GAMBONI
 LANDSCAPE ARCHITECT 2702
 3012 PACIFIC AVENUE
 STOCKTON 95204
 209 948 8335